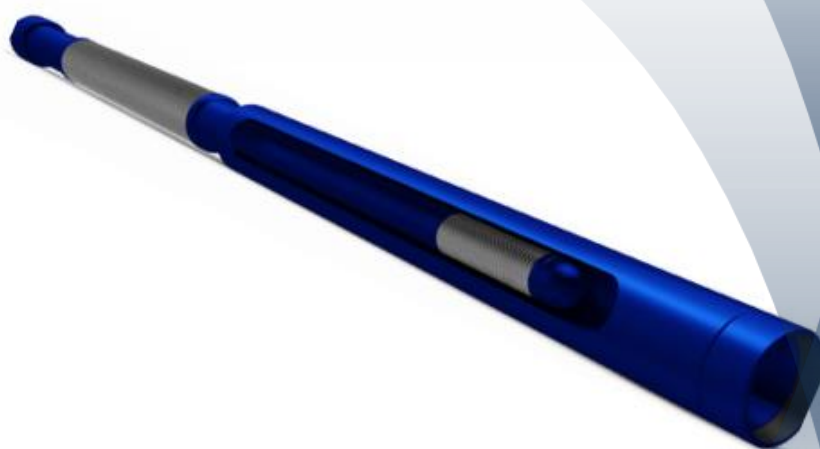


Gas and Sand Shield

Odessa Separator's Gas and Sand Shield Combines Gas Separation and Sand Control.

Gas & Sand Shield is made up of the diffused intake port which minimizes gas from entering the separator and a large body annulus for reducing fluid velocity allowing for gas separation. 25 ft. overall length with 21 ft. internally mounted dip tube.

The Gas & Sand Shield is designed to provide gas separation and sand filtration. 10 ft. intake area is available with 12 slot or 15 slot screen.



Gas and Sand Shield Data:

| Gas and Sand Shield (25 Ft.) | | | | |
|------------------------------|--------------|---|---|------|
| Size (OD) | Min CSG Size | Screen Open Area 12 Slot (in ²) | Screen Open Area 15 Slot (in ²) | Lbs. |
| 2-3/8" x 3" | 4-1/2" | 98 | 119 | 180 |
| 2-7/8" x 3-1/2" | 5-1/2" | 118 | 143 | 250 |
| 2-7/8" x 4-1/2" | 6-5/8" | 118 | 143 | 305 |
| 3-1/2" x 4-1/2" | 6-5/8" | 137 | 167 | 320 |
| 3-1/2" x 5-1/2" | 7" | 137 | 167 | 375 |

Benefits

- Reduces Gas locking.
- Increases pumping efficiency.
- Provides sand filtration.
- "V" shaped openings between wraps; provides self-cleaning action and greatly reduces flow friction
- Available with 12 slot or 15 slot screen.